

Hard or Soft C?

a phonics practice game

Click to start.

Created by The Curriculum Corner



Hard C

Soft C

cold



Hard C

Soft C



Hard C

Soft C

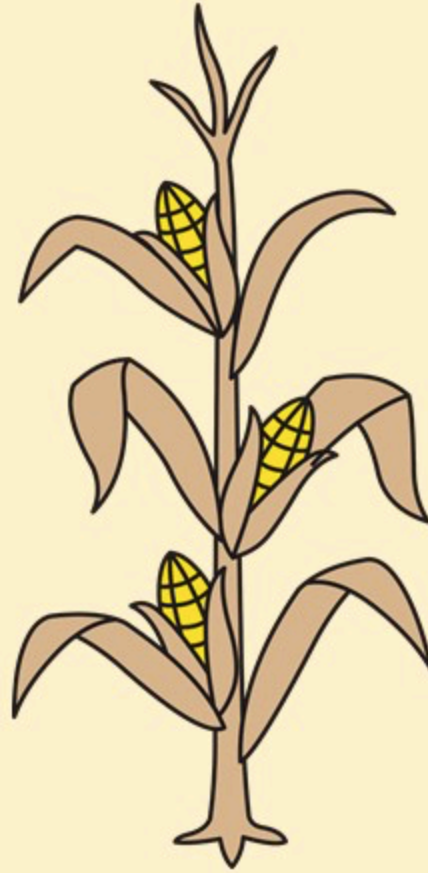
centipede



Hard C

Soft C

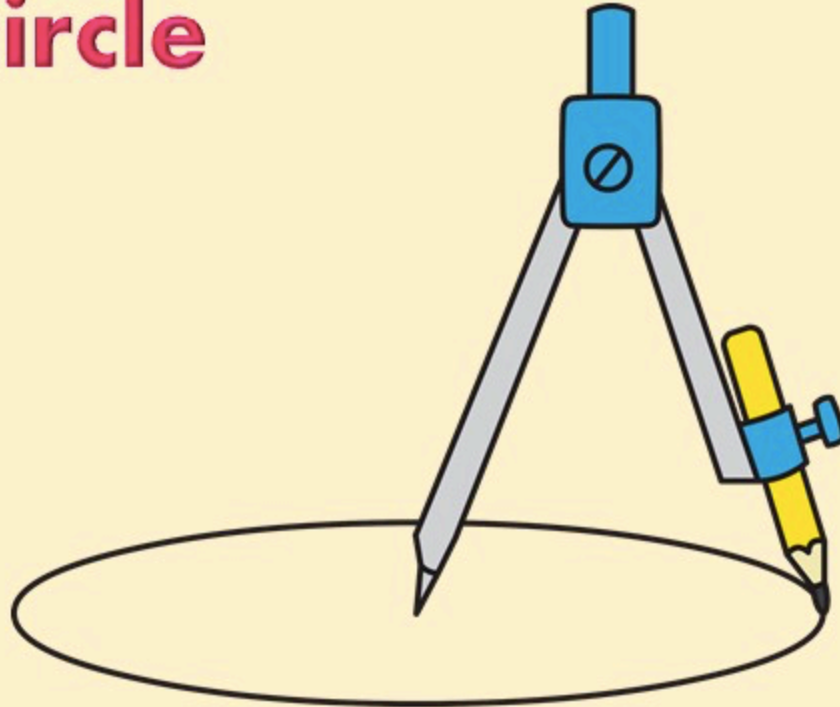
corn



Hard C

Soft C

circle



Hard C

Soft C

celebrate



Hard C

Soft C

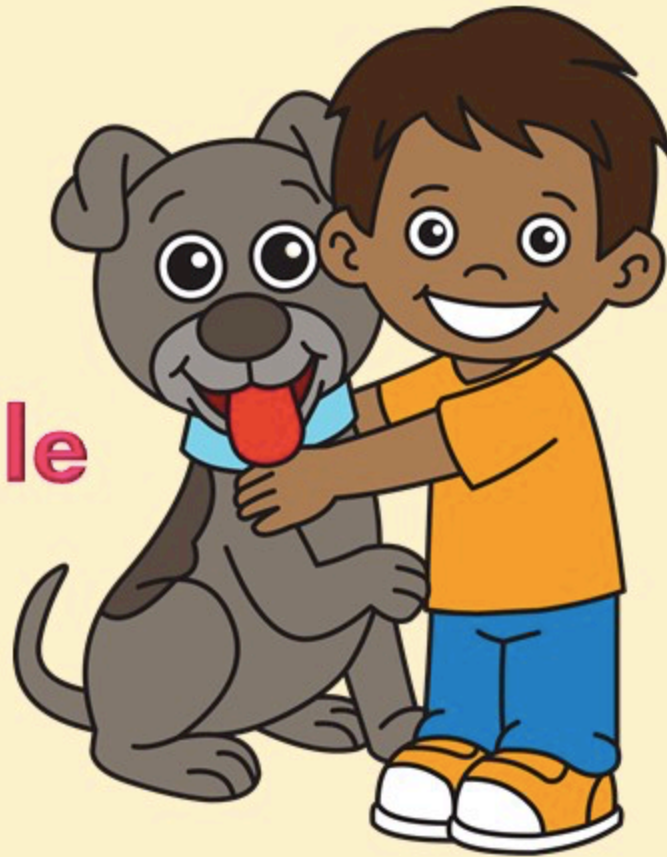
crutch



Hard C

Soft C

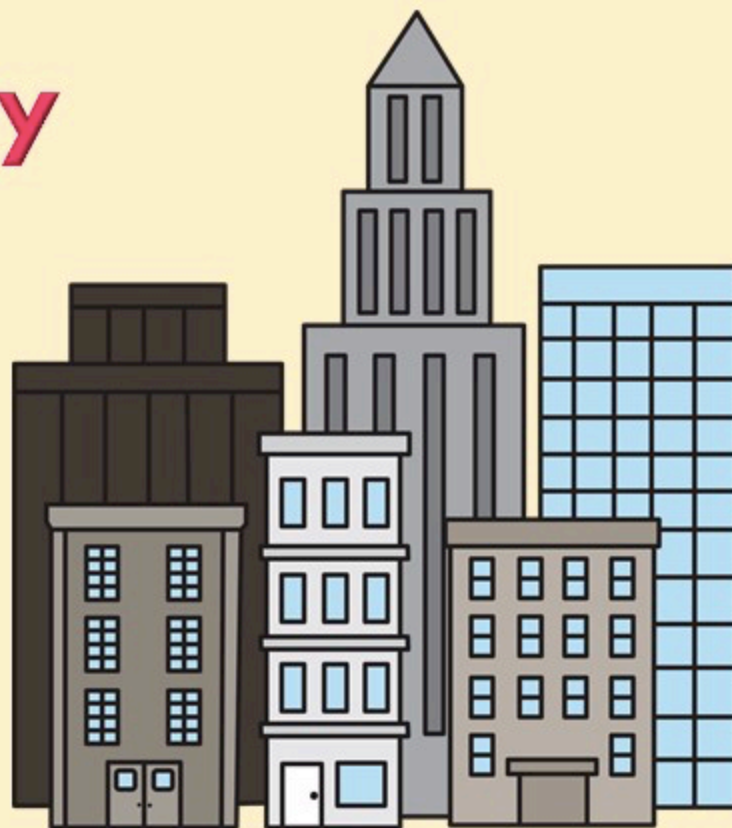
cuddle



Hard C

Soft C

city



Hard C

Soft C

cop



Hard C

Soft C

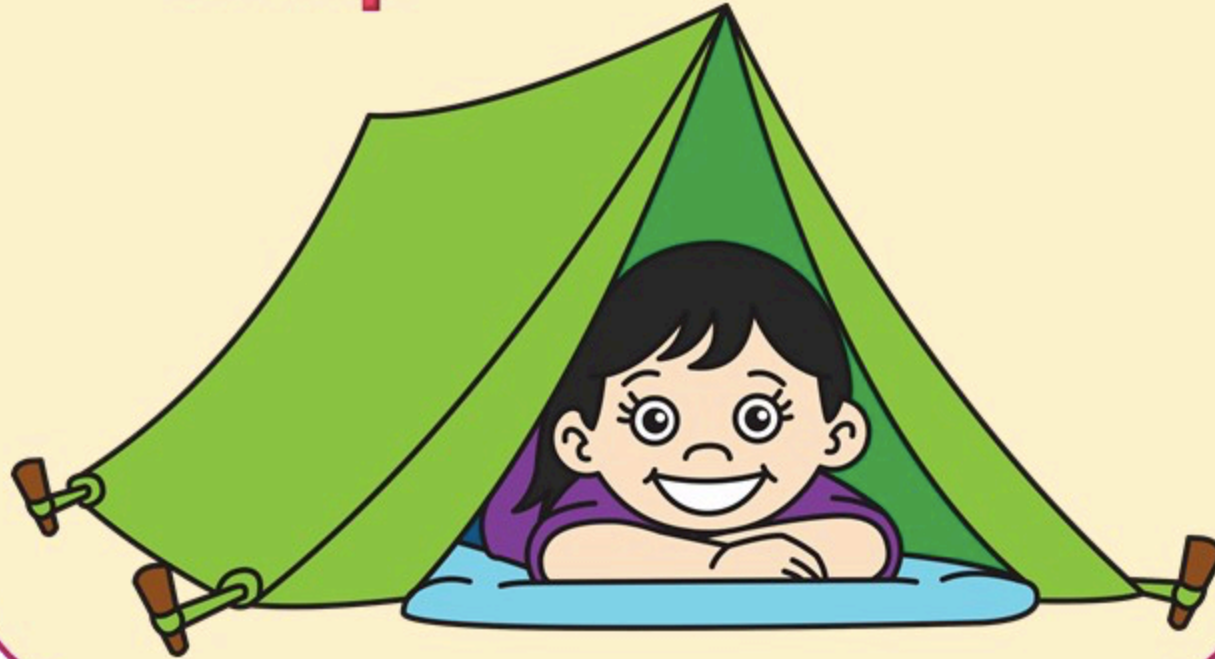


camel

Hard C

Soft C

camp



Hard C

Soft C

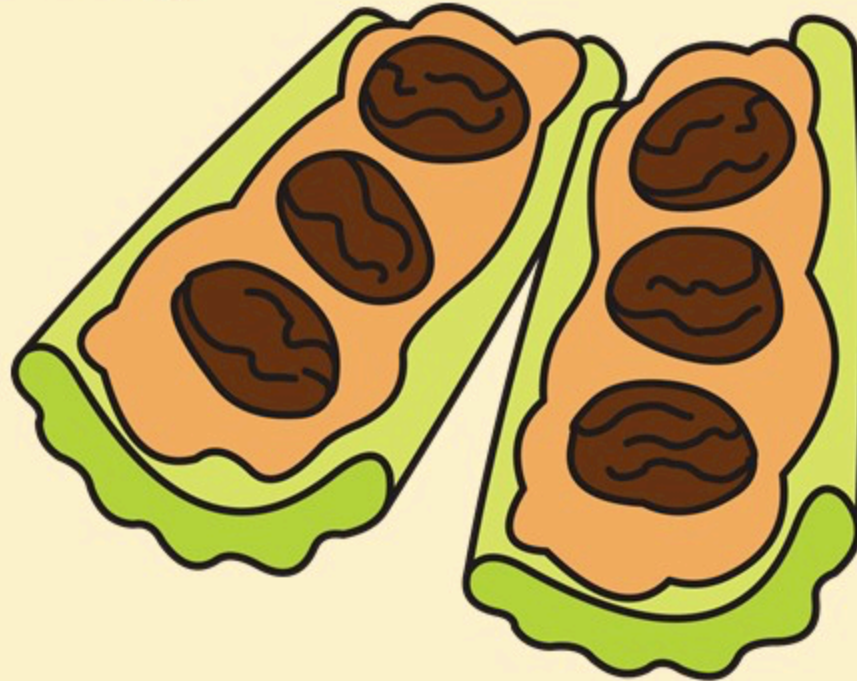
candle



Hard C

Soft C

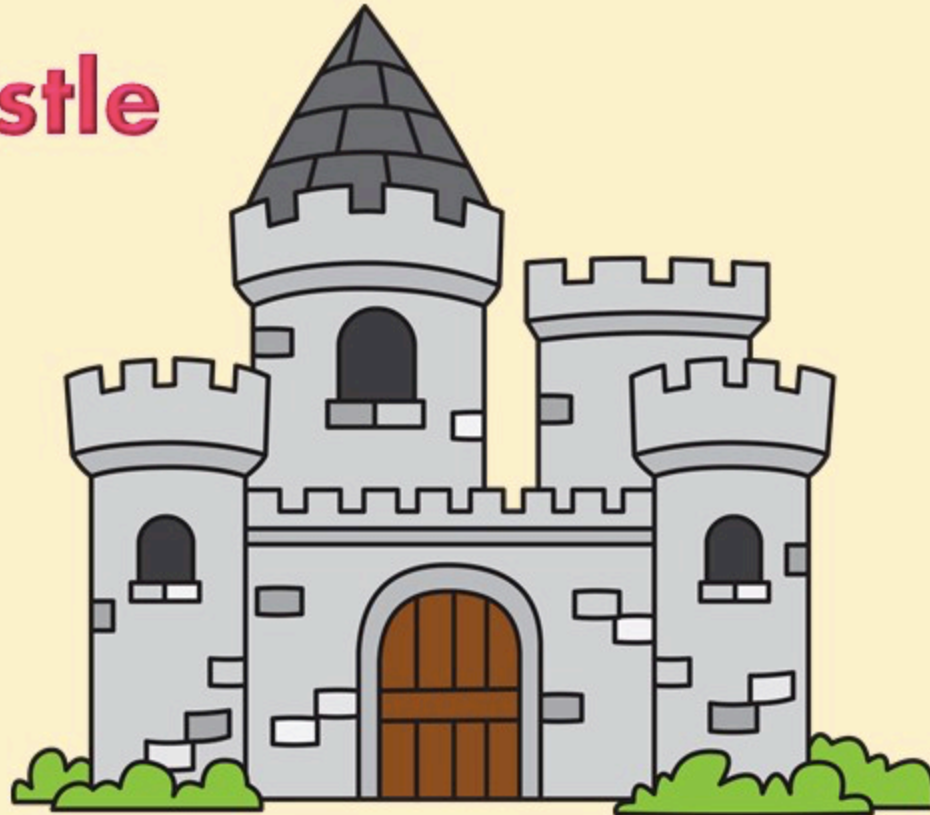
celery



Hard C

Soft C

castle



Hard C

Soft C

comb



Hard C

Soft C

Way to Go!

[Click here to go back to the beginning.](#)

Created by The Curriculum Corner